



# MONTHLY MEMBERSHIP PROGRESS REPORT

District 40 S

Results as of: 10/31/2018

GMT: WILLIAM PHILLIPI

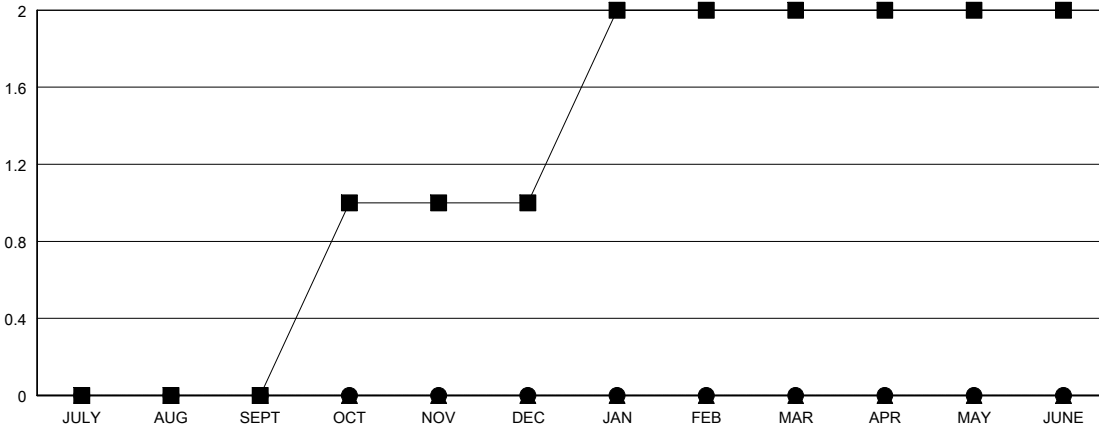
LOCATION NEW MEXICO

GMT CA

| Clubs                 |               |           |               |
|-----------------------|---------------|-----------|---------------|
| RESULTS FOR 2018-2019 |               |           |               |
| QUARTER               | NEW CLUB GOAL | NEW CLUBS | DROPPED CLUBS |
| JULY/AUG/SEPT         | 0             | 0         | 0             |
| OCT/NOV/DEC           | 1             | 0         | 0             |
| JAN/FEB/MAR           | 1             | 0         | 0             |
| APR/MAY/JUNE          | 0             | 0         | 0             |

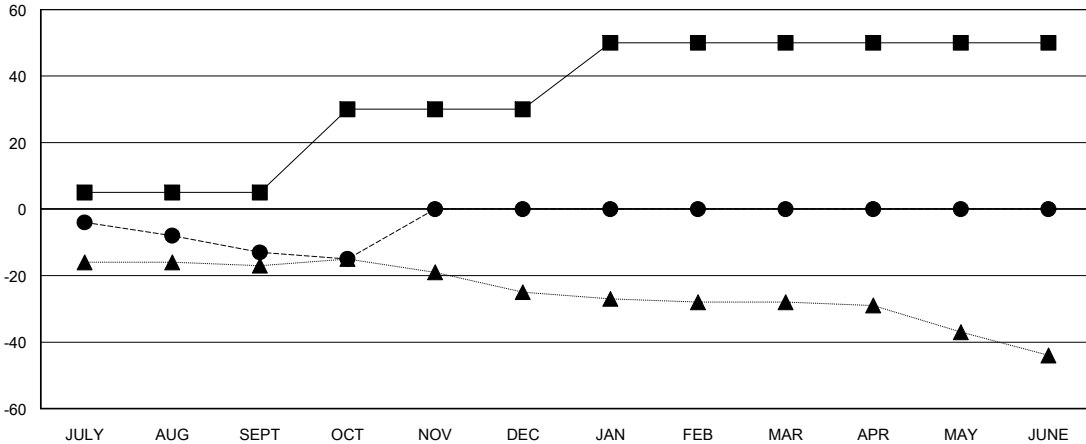
| Members               |                        |                      |  |
|-----------------------|------------------------|----------------------|--|
| RESULTS FOR 2018-2019 |                        |                      |  |
| QUARTER               | MEMBER GROWTH NET GOAL | MEMBER GROWTH ACTUAL | DROPPED MEMBERS ACTUAL (including transfers) |
| JULY/AUG/SEPT         | 5                      | 14                   | 24   |
| OCT/NOV/DEC           | 25                     | 7                    | 7  |
| JAN/FEB/MAR           | 20                     | 0                    | 0  |
| APR/MAY/JUNE          | 0                      | 0                    | 0  |

GOALS AND ACTUAL NEW CLUBS CUMULATIVE



- - CURRENT YEAR GOALS FOR NEW CLUBS
- - CURRENT YEAR ACTUAL NEW CLUBS
- ▲ - LAST YEAR ACTUAL NEW CLUBS

GOALS AND ACTUAL MEMBERS CUMULATIVE



- - MEMBER GROWTH NET GOAL
- - MEMBER GROWTH ACTUAL
- ▲ - LAST YEAR MEMBERSHIP ACTUAL

|                  |
|------------------|
| DROPPED CLUBS: 0 |
|------------------|

9 CLUBS OF 28 ADDED 1 OR MORE NEW MEMBERS

| GENDER DISTRIBUTION                    |              |
|--|--------------|
| MALE                                   | 326 (64.43%) |
| FEMALE                                 | 180 (35.57%) |
| Women Percentage Fiscal Year Goal: 25% |              |

| DROPPED MEMBERS |           |
|-----------------|-----------|
| DECEASED        | 3         |
| CLUB CANCELLED  | 0         |
| OTHER           | 28        |
| <b>TOTAL</b>    | <b>31</b> |

[CLICK HERE FOR CUMULATIVE MEMBERSHIP DATA](#)

|                                 |     |
|---------------------------------|-----|
| TOTAL FAMILY UNIT MEMBERS       | 100 |
| FAMILY MEMBERS PAYING HALF DUES | 52  |